

2019 Small Capacity Constraints II

Orlando D. Cruz, P.E., CFM

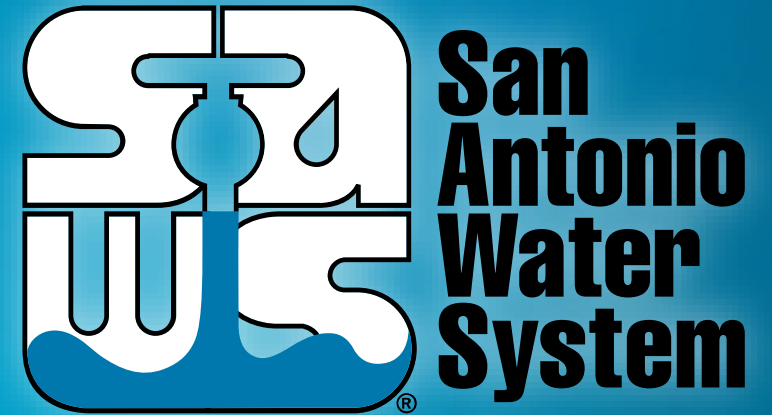
Project Engineer, Sewer & Water Pipeline

Roxanne Lockhart

Contract Administrator, Contract Administration

Tracy Burns

SMWVB Specialist



Non-Mandatory WebEx Pre-Bid Meeting

April 28, 2022

MAKING SAN ANTONIO
WATERFUL 

Oral Statements

Oral statements or discussion during the pre-bid meeting today will not be binding, nor will it change or affect the terms or conditions within the Plans and Specifications of these projects. Changes, if any, will be addressed in writing only via an Addendum.

Agenda

- General Information
- Small, Minority, and Woman-Owned Business (SMWB) Requirements
- Contract Solicitation Website & Vendor Registration & Notification (VRN)
- Solicitation Schedule
- Bid Packet Preparation
- Contract Requirements
- Key Reminders
- Bid Opening Instructions
- Contact Information
- Project Background
- Special Conditions
- Technical Information (Sites, Special Provisions to Technical Specifications, etc.)

General Information

- Non-mandatory pre-bid meeting
- Attendees should sign-in via chat on WebEx
- Presentation has been posted on SAWS website along with the sign in sheet.
- Geotechnical Data Report has been posted on SAWS website (available with electronic disclaimer)
- Construction services being procured through low bid
- Construction Estimate: \$4,061,965.00
- Calendar Days: 210 days

Aspirational SMWB Goal

Industry	Aspirational SMWB Goal
Construction	20%

The aspirational SMWB goal is 20% of your total bid price.

Minimum Qualifications for SMWB recognition:

- **Certification from the South Central Texas Regional Certification Agency**
 - Businesses must be SBE-Certified (including MBEs and WBEs)
 - Texas Historically Underutilized Business “HUB” also recognized
- **Local office or local equipment yard**

Good Faith Effort Plan (GFEP) FAQs

- **Q: Is the 20% SMWB goal mandatory?**
A: No, but we ask prime contractors to do their best with good faith outreach efforts. If the goal is not met, proof of outreach efforts is required with the submittal.
- **Q: What if I am having trouble finding SMWB subcontractors?**
A: Outreach lists from the South Central Texas Regional Certification Agency are now Excel-exportable at www.sctrca.sctrca.org. If you are having trouble with the downloads, please email the SMWB Program Manager.
- **Q: What if my business is SMWB-certified? Do I need to find SMWB subs?**
A: If your firm is SMWB-certified, you will most likely meet the goal. However, the GFEP is a required document, and a good faith outreach effort is still necessary.
- **Q: Do I need to include all my subcontractors in the GFEP or just those that qualify towards the SMWB goal?**
A: All subcontractors need to be included in the GFEP, even those that may not count towards the SMWB goal.
- **Q: What if I have questions about the GFEP?**
A: Please contact the SMWB Program Manager at 210-233-3420, or at Marisol.Robles@saws.org. GFEP questions can be asked at any time before the submittal is due.

Post Award: Subcontractor Payment & Utilization Reporting (S.P.U.R.) System

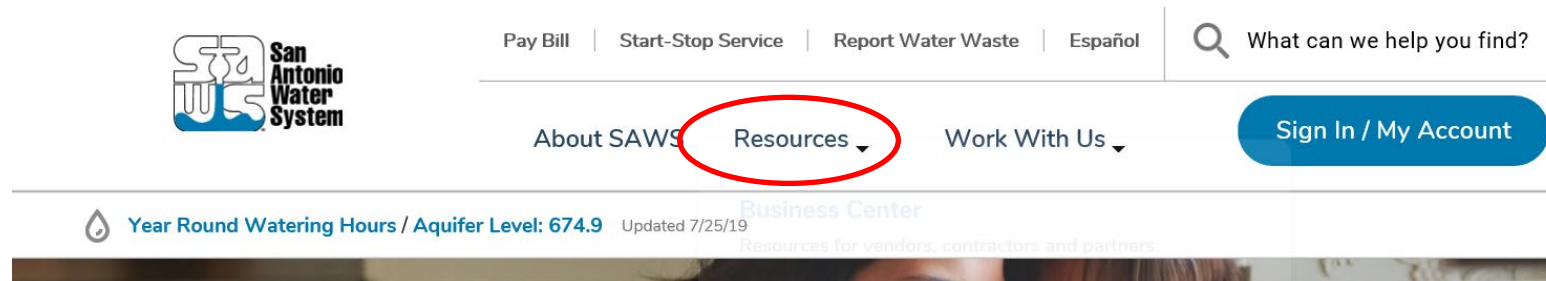
- 1. Subcontractor & Supplier Payment Tracking
- 2. Subcontractor and Supplier Additions or Substitutions
- 3. Must be Current and Accurate before Retainage is released

<https://saws.smwbe.com>

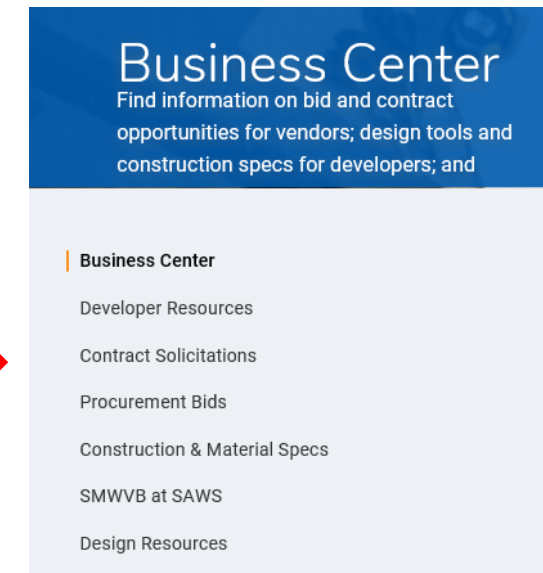


Contract Solicitations Website

- To locate the Contract Solicitations website choose Resources



- At the drop down menu choose Contract Solicitations.



Vendor Registration & Notification (VRN)

Reasons to Register in the VRN

- Receive bid notices directly in your email “Inbox”.
- Download bid documents.
- Subscribe to specific bids.
- Receive addendum notifications.



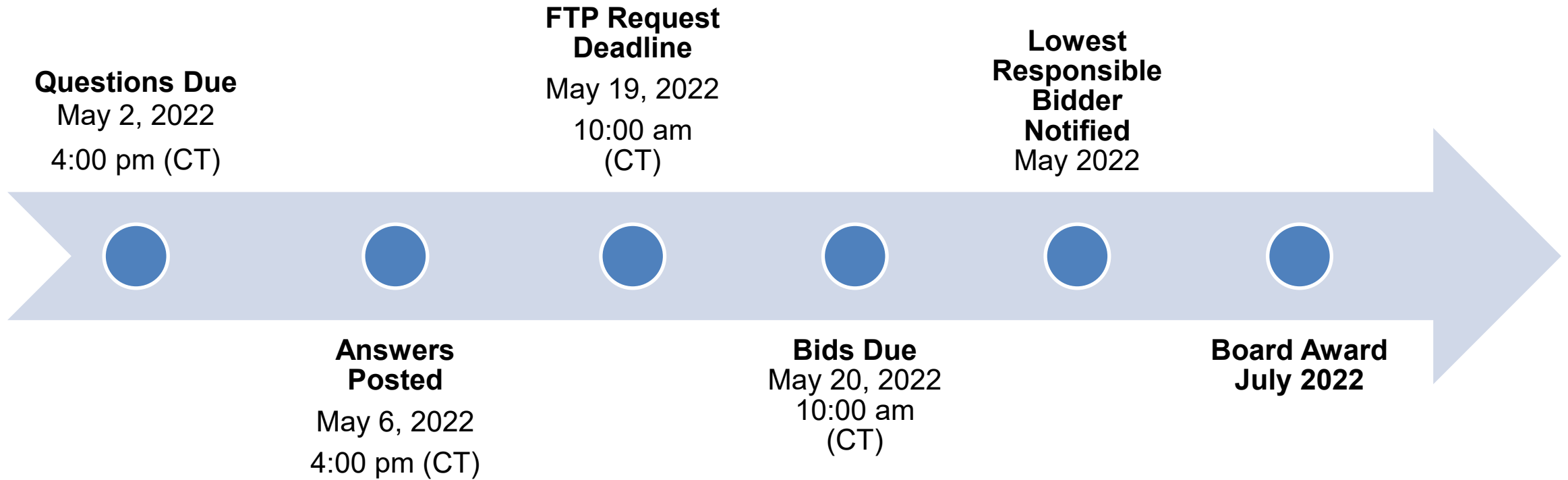
Notify Me

Receive updates sent straight to your inbox.

Subscribe

https://apps.saws.org/Business_Center/Contractsol/

Solicitation Schedule



Bid Packet Preparation

- Electronic or Physical bid permitted. If electronic see Electronic Bid Opening Instructions for last day to request FTP site access.
- Utilize the Bid Packet Checklist within the specifications
 - Only limited items are required with the initial bid packet
- **Double check all** mathematical calculations and verify all extensions
- Addendums are acknowledged on the Bid Proposal
- Ensure Mobilization & Prep ROW Line Item does not exceed the percentage allowed (line items I-77)
- Apparent low bidder must submit additional information within 24 hours of the bid opening to include:
 - Conflict of Interest Questionnaire, Proof of Insurability (Letter from Insurer or Sample Certificate of Insurance), Company Information Packet, Statement Regarding Ability to Complete the Project, W-9, Statement of Bidder's Experience, Detailed Baseline Schedule with NTP of July 20, 2022.

Bid Packet Preparation (*cont.*)

- Bidder shall ensure that the 3 projects submitted on the Statement of Bidder's Experience form are:
 - Of similar size and scope as indicated on the check boxes
 - Completed by the bidder (submitting contractor) or subcontractor as necessary
 - Completed in the past five (5) years
 - Owner references (entity bidder contracted with)
 - Verifiable with up-to-date contact information for the Owner
- Failure to complete the forms properly may result in the bid being found non-responsive

Contract Requirements

Prevailing Wage Rate and Labor Standards – Section 2.10 of the General Conditions

- Payroll records are subject to review
- Contractors to utilize LCP Tracker
- Certified payroll to be submitted on weekly basis
- Contractors are responsible for sub-contractor payroll
- Late payrolls delay contractor payments and/or release of retainage
- Wage decisions are included within the specifications
- Site visits are random and unannounced
- Interviews will be conducted and will be private & confidential
- All apprenticeship programs will need to be approved by Department of Labor prior to starting

Contract Requirements

- Insurance requirements are found in Section 5.7 of the GCs
 - Installation Floater coverage is required in lieu of Builder's Risk insurance
- Insurance must be compliant for all SAWS contracts prior to executing the contract
- SAWS will ask for insurance prior to Board award to expedite execution of the contract
 - Any deficiencies must be corrected prior to Board award
- Contractor must maintain insurance coverage during the construction of this Project
- Additional insured coverage is also required per the Special Conditions (SC3) for multiple landowners

Contract Requirements

Supplemental Conditions (Continued)

- Contractor shall perform the work with its own organization on at least 40% of the total original contract price which should be indicated on the Good Faith Effort Plan.

Prime Contractor's Percentage of Participation: (Ex: 100% is the total value of the contract.) _____ %

- Liquidated damages will be assessed at \$1047.00 per day

Key Reminders

- All questions should be sent in writing to Roxanne Lockhart, Contract Administrator by email roxanne.lockhart@saws.org or fax (210) 233-4438.
- Please identify the project by its associated solicitation number and project name (CO-00532 2019 Small Capacity Constraints II).
- Please be advised that Bidders are prohibited from communicating with any other SAWS staff, the Consultant, the Developer, or City of San Antonio officials regarding this IFB up until the contract is awarded as outlined in the Instructions to Bidders.

Bid Opening Procedures

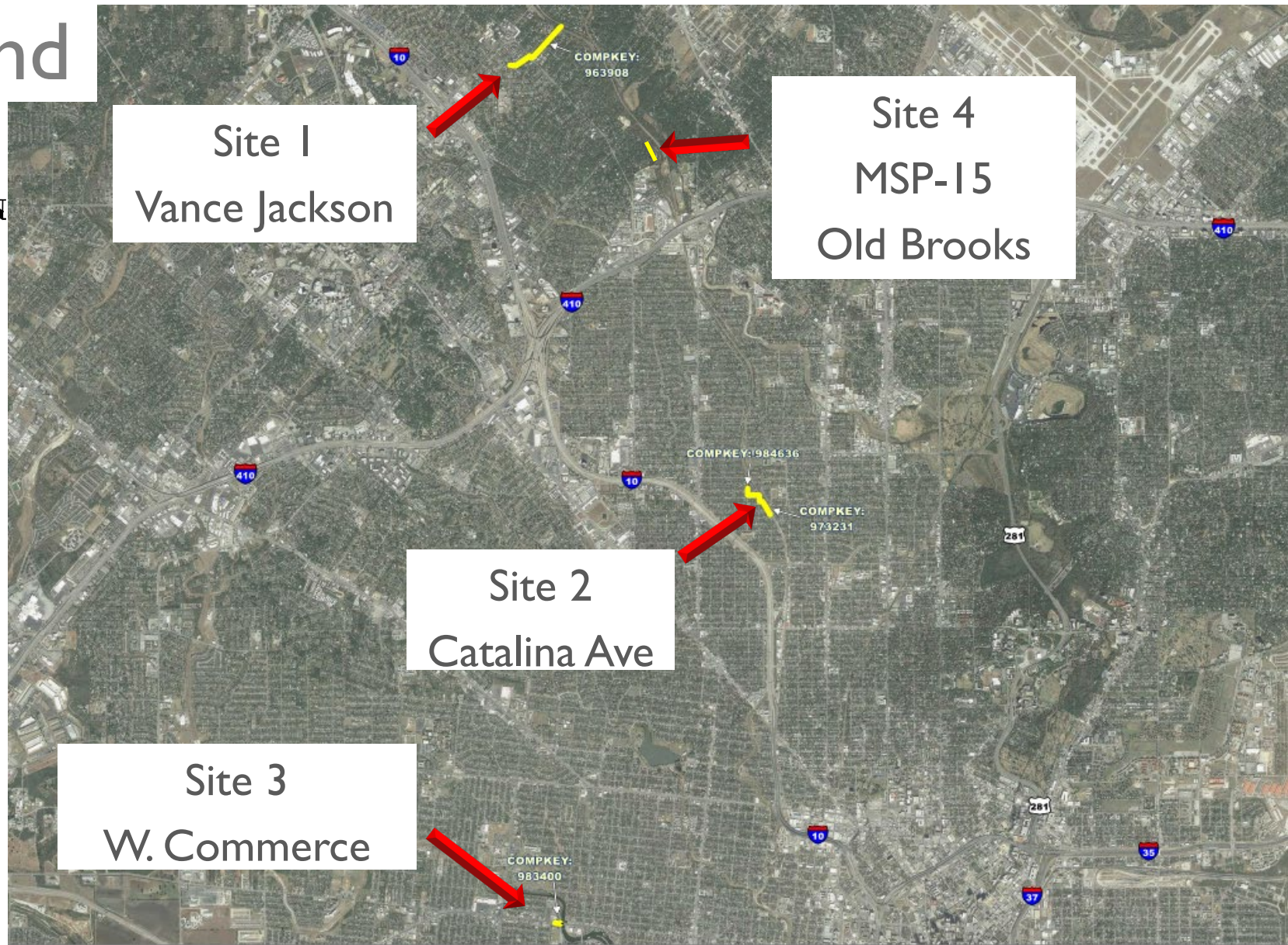
- Due to the COVID-19 emergency and to protect the health of the public, SAWWS is implementing new procedures for the submission of bids.
 - Bids will be received either Electronically or through Sealed bids.
 - Electronic bids will be received via the secure SAWWS FTP site.
- If submitting a sealed bid, it may be received by Contract Administration, 2800 U.S. Hwy 281 North, Tower II, Customer Center Building, via a drop box located on the left wall when walking through the first set of double glass doors of the main Tower II entry on the north side of the building.
 - If bids will be delivered in person to SAWWS, Bidders should allow sufficient travel time
- Late bids will not be accepted and will be returned/remain unopened.

Contact Information

<u>Contact Name</u>	<u>Title</u>	<u>Telephone Number</u>	<u>Email address</u>
Roxanne Lockhart	Contract Administrator	210-233-3095	Roxanne.Lockhart@saws.org
Tracy Burns	SMWVB Program Specialist	210-233-2950	Tracy.Burns@saws.org
Marisol V. Robles	SMWVB Program Manager	210-233-3420	Marisol.Robles@saws.org

Project Background

- Design Consultant:
 Kyle Kaspar, PE
 Jones|Carter (SCC II)
 Bryan Spina, PE
 Ardurra/LNV (MSP-15)
- 4 Project Sites
- Small Diameter Capacity Constraints
- EPA Consent Decree



Project Background

4 Project Locations

- CoSA ROW & Alleys
 - Approx. 2,800 LF of 10-in, 250 LF of 12-in, and 850 LF of 15-in sanitary sewer line by Open Cut.
 - 695 LF 24-in and 30-in steel casing by jack and bore.
 - 536 LF 24-in and 30-in steel casing by open cut
- 16 (new) Easements, 1 JUA



Site 1
Vance Jackson

Site 4
MSP-15
Old Brooks

Site 2
Catalina Ave

Site 3
W. Commerce

Special Conditions

- Contractor to submit a completion report when the report is complete
 - Pre and post video as per NASSCO requirements.
 - Any tests and/or submittals specified in the Contract Documents
- Special Coordination Requirements
 - CoSA Greenway Trails System
 - Contractor shall complete the work in a manner that does not unreasonably impact the CoSA Greenway Trail System or sidewalks that connect to existing trails.
 - CPS Energy
 - Contractor to begin coordination immediately after Notice to Proceed is provided by SAWS to avoid construction delay.
 - Payment for utility pole bracing will be made up to the allowance included in the bid.

Special Conditions

- Special Coordination Requirements

- Union Pacific Railroad

- Contractor shall comply with all requirements of the executed agreements between SAWS and UPRR.

- Separate agreements for Site II and Site IV.

- CoSA

- Contractor shall obtain right-of-way (ROW) permits, and conform to the CoSA requirements for impacted streets along with any other pertinent items located within CoSA ROW.

- Floodplain Development permit (FPDP) will be necessary at **two** sites. SAWS will provide FPDP to contractor.

- Site 1 – Tributary to Olmos Creek

- Site 3 – Zarzamora Creek

Special Conditions

- Project Requirements

- Final completion of all “Project Sites” shall be achieved in 210 calendar days.

- Temporary traffic detours; see site specific plan sheets.

- Oak Creek Apartments

- Contractor to coordinate with the apartment complex to maintain access to the property and primary business office at all times.

- Our Lady of the Lake University

- Contractor to coordinate with University for temporary closure of driveway to Sister Isabel’s Way

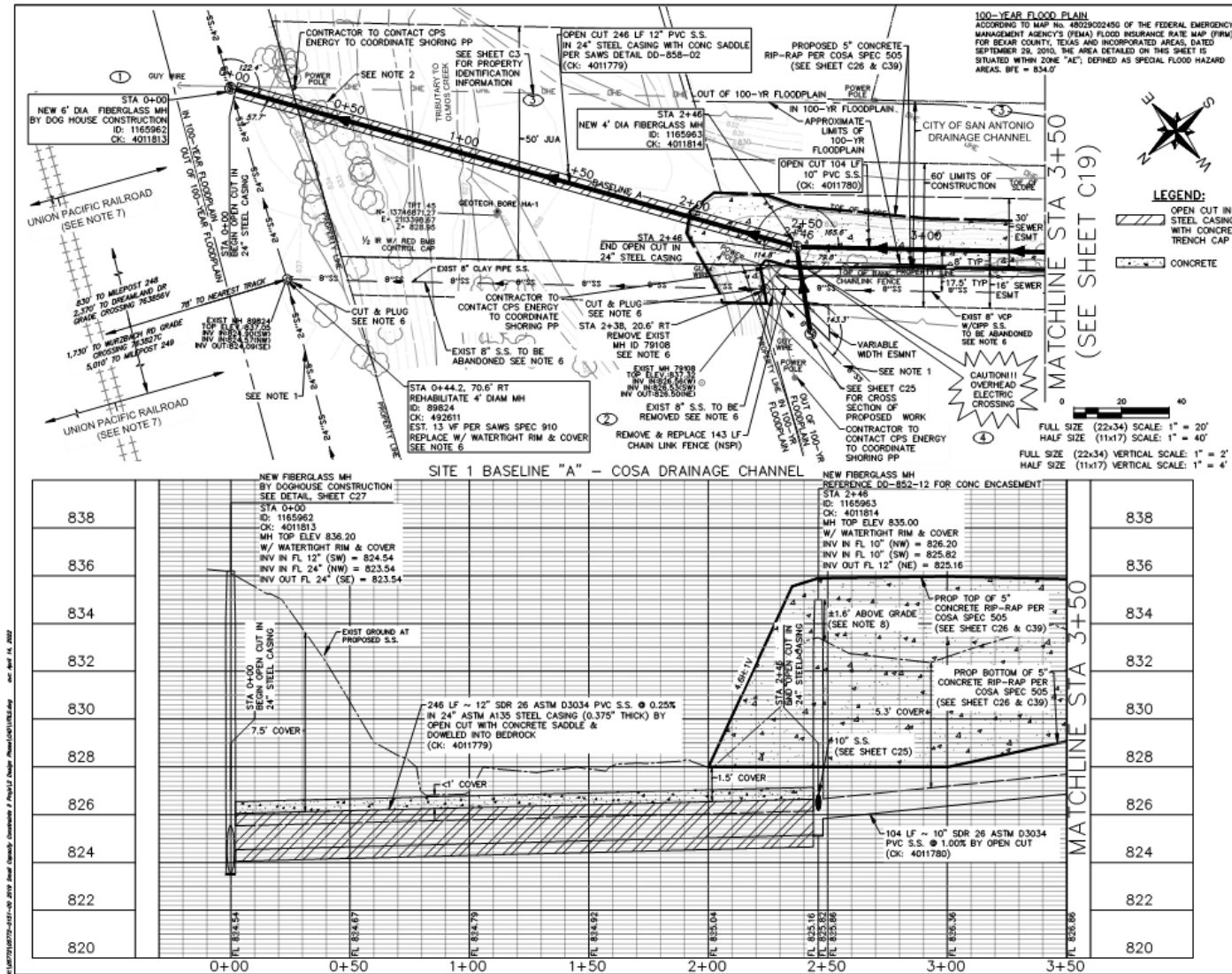
- CoSA –VIA Metropolitan Transit

- Contractor must contact VIA Dispatch 48 hours prior to any work within the vicinity of VIA bus stop 73743 on W. Commerce St.

- Brooks Academy

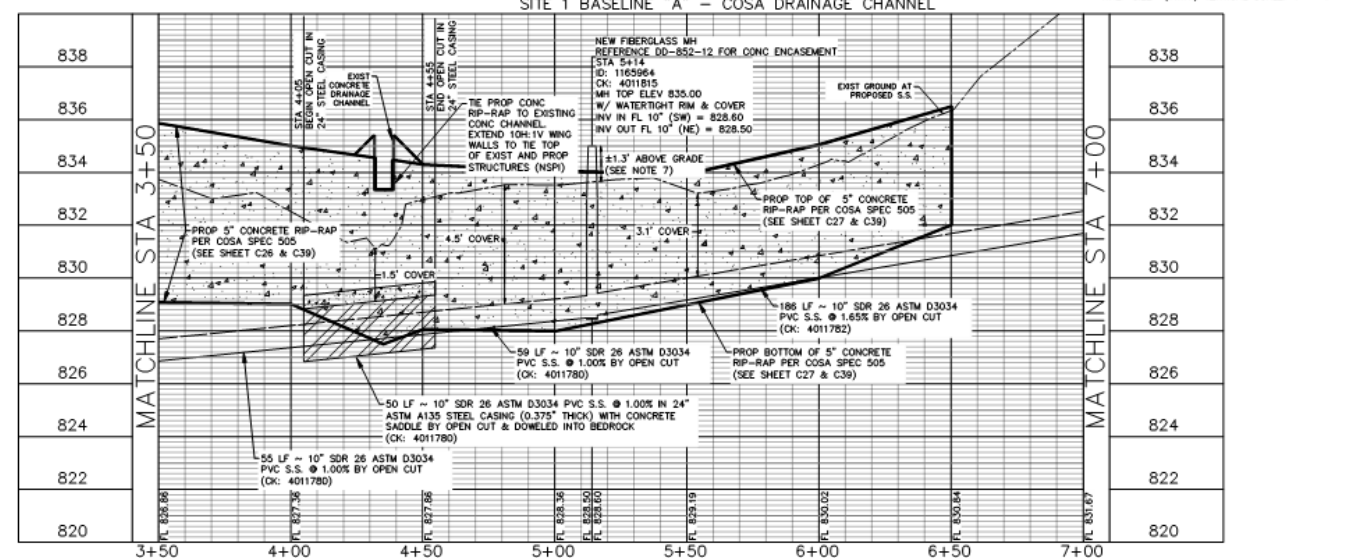
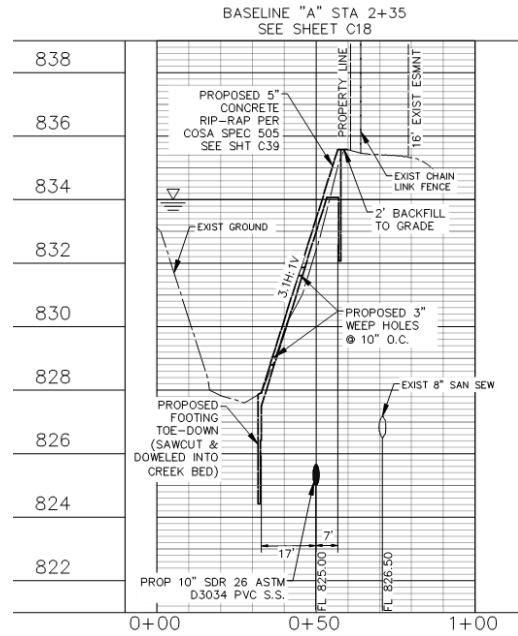
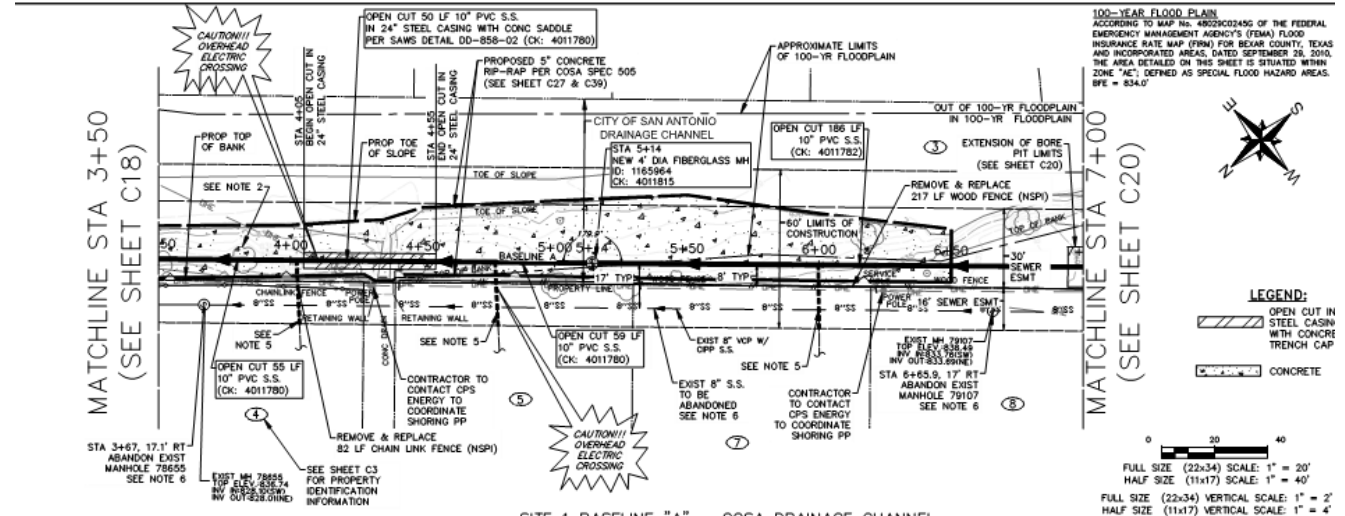
Site I – CoSA Drainage Channel @ Olmos Creek

- New 12-inch Sewer Alignment
- Open Cut with Steel Casing and Concrete Saddle
- Steep Embankments
- Exposed Rock in Olmos Tributary
- UPRR - >50' away = NO Permit for this site
- 100-yr Floodplain
- Tree Protection & Removal
- CPS Pole Bracing



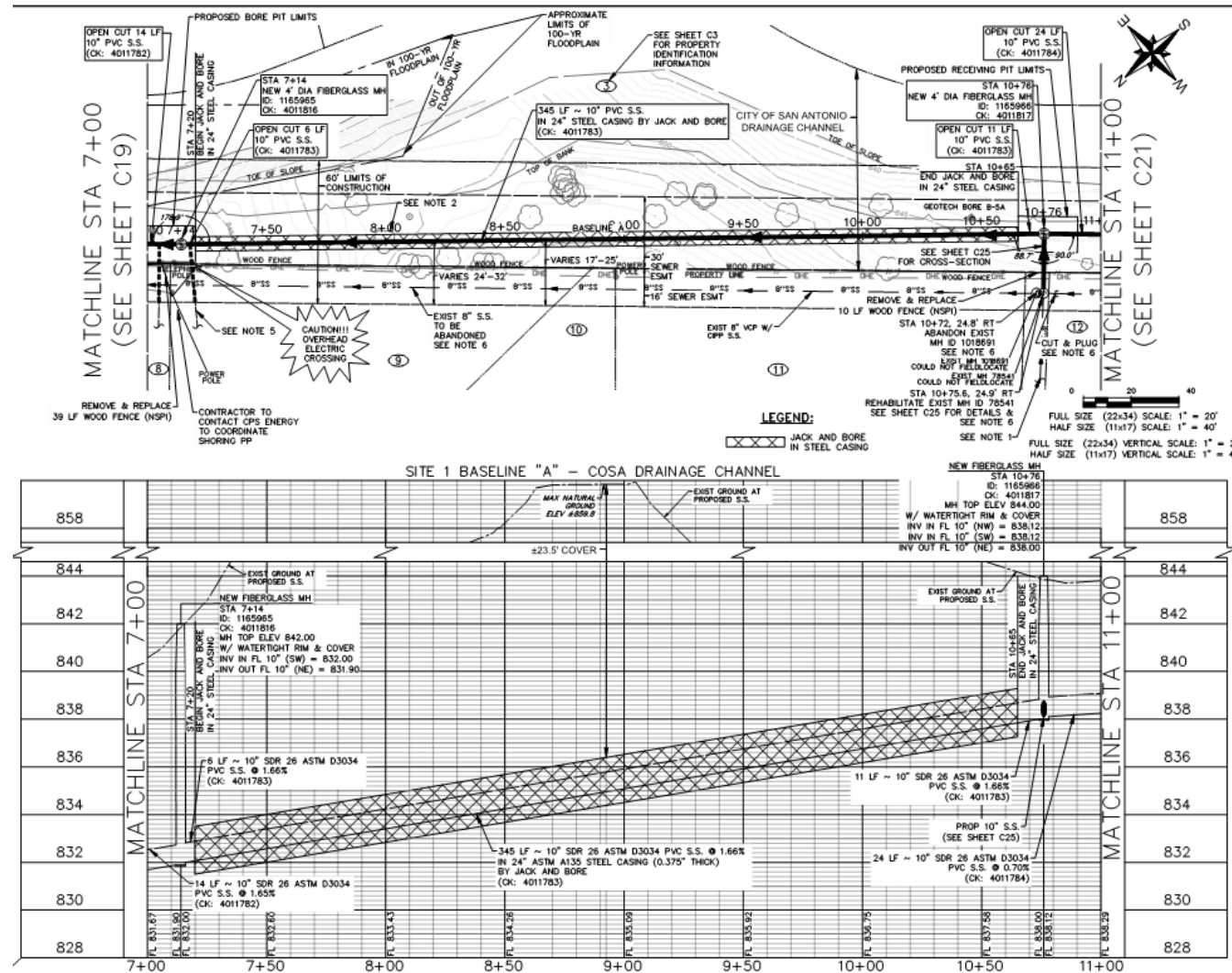
Site I – CoSA Drainage Channel @ Olmos Creek

- New 12-inch Sewer Alignment
- Steep, Unstable Embankments
- Concrete Slope Paving – CoSA Std.
- Drainage Spillway Tie-in
- CPS Pole Bracing
- 100-yr Floodplain



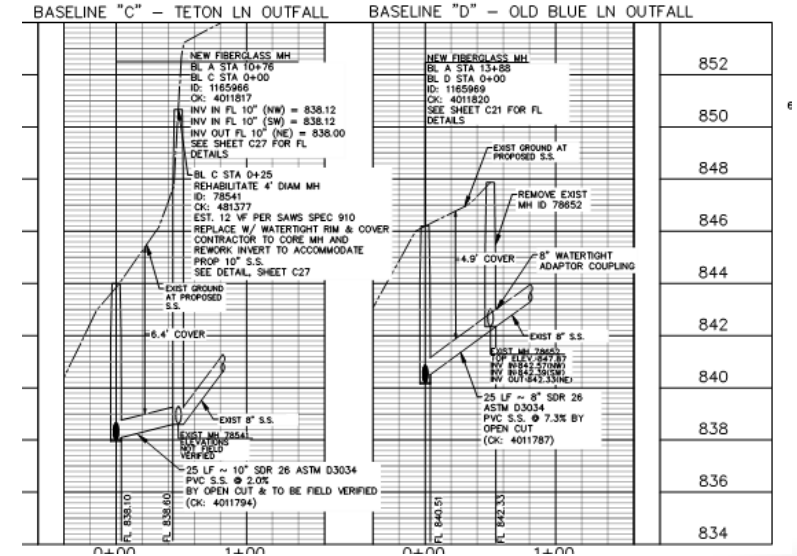
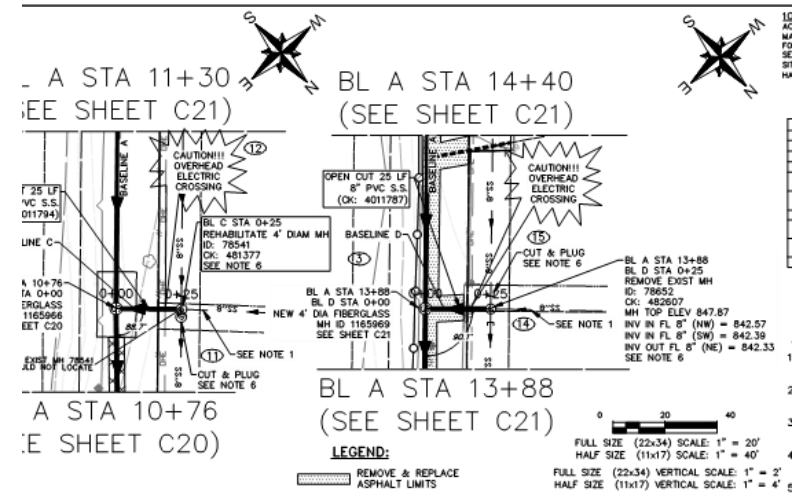
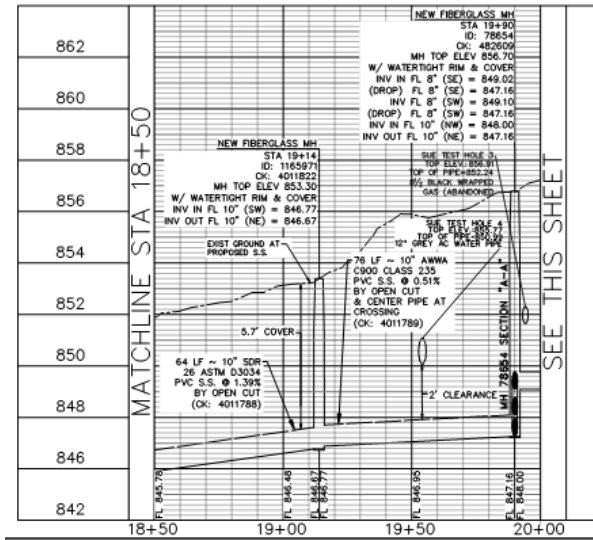
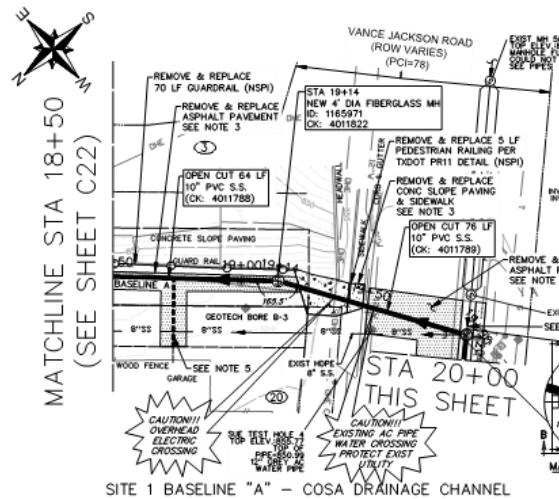
Site I – CoSA Drainage Channel @ Olmos Creek

- New 12-inch Sewer Alignment
- CPS Pole Bracing
- Lateral Reconnection
- Jack and Bore in 24-in Steel Casing
- Variable Depth from 8' Cover to >23' Cover
- Vertical Alignment potentially on sub-surface material interface line.



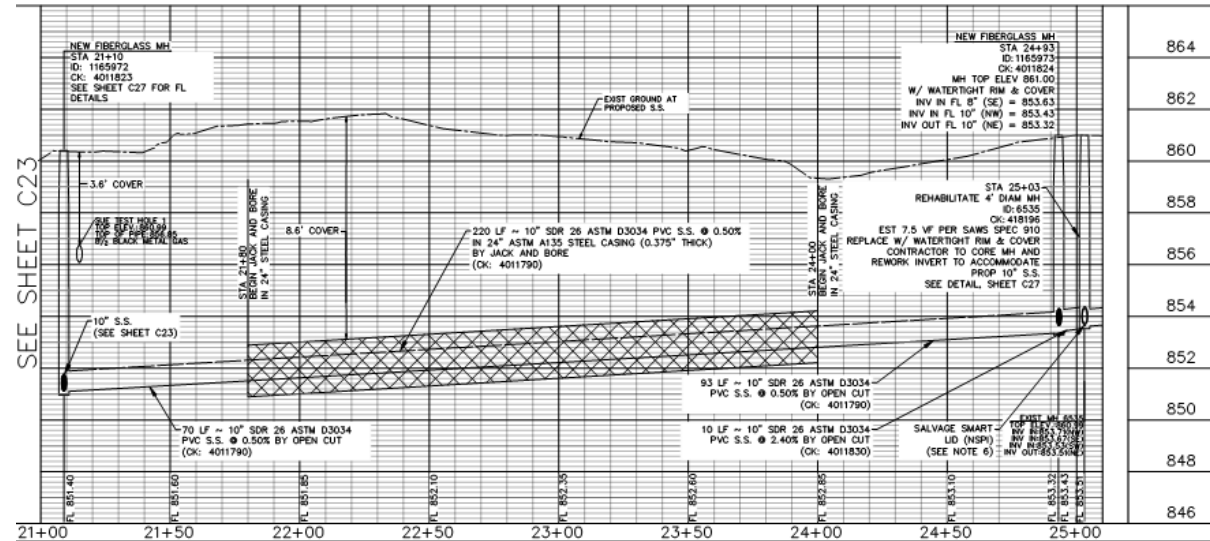
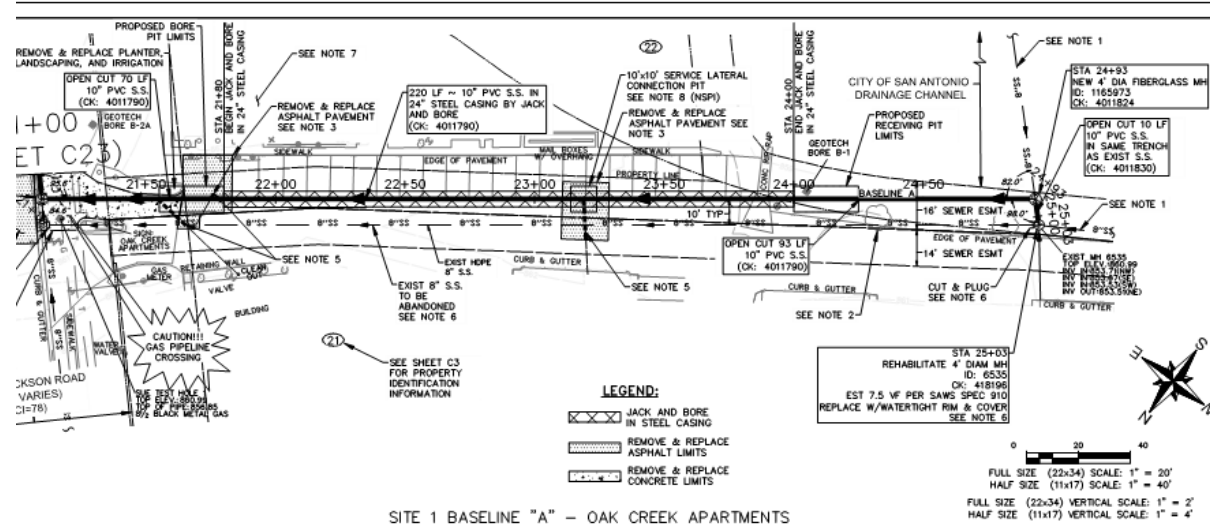
Site I – CoSA Drainage Channel @ Vance Jackson

- New 12-inch Sewer Alignment
- Open Cut across Vance Jackson
- Traffic Control
- Service Laterals Extension and Reconnection
- Sewer Main Extensions to New Main

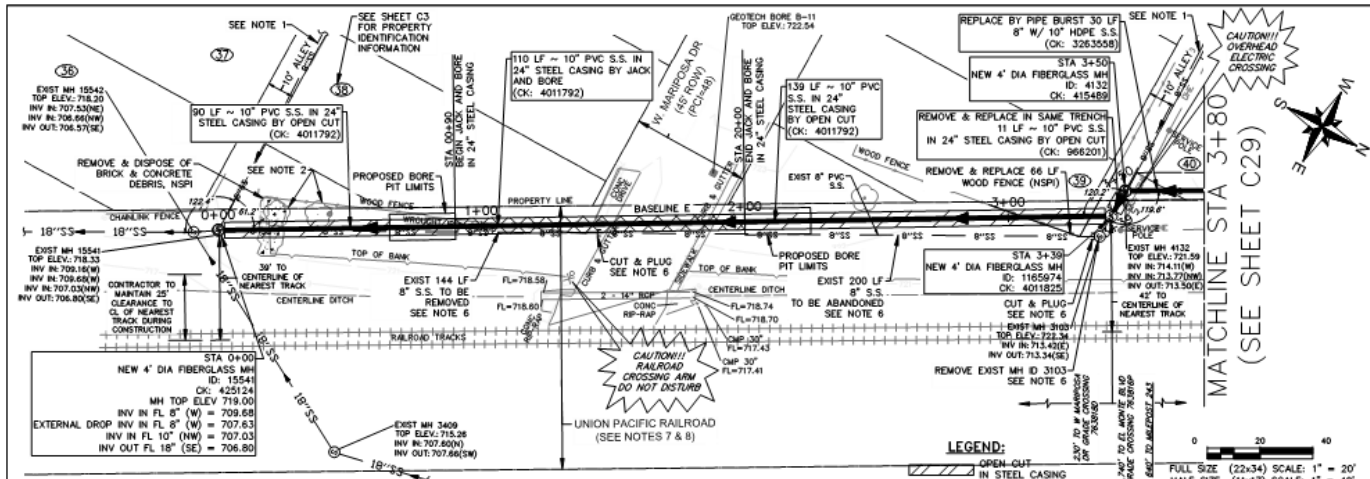


Site I – Oak Creek Apartments

- New 12-inch Sewer Alignment
- Jack and Bore in 24-in Steel Casing
- Service Lateral access pit mid-bore
- Coordination with Property Owner



Site 2 – Santa Paula, Alleys, Catalina, UPRR

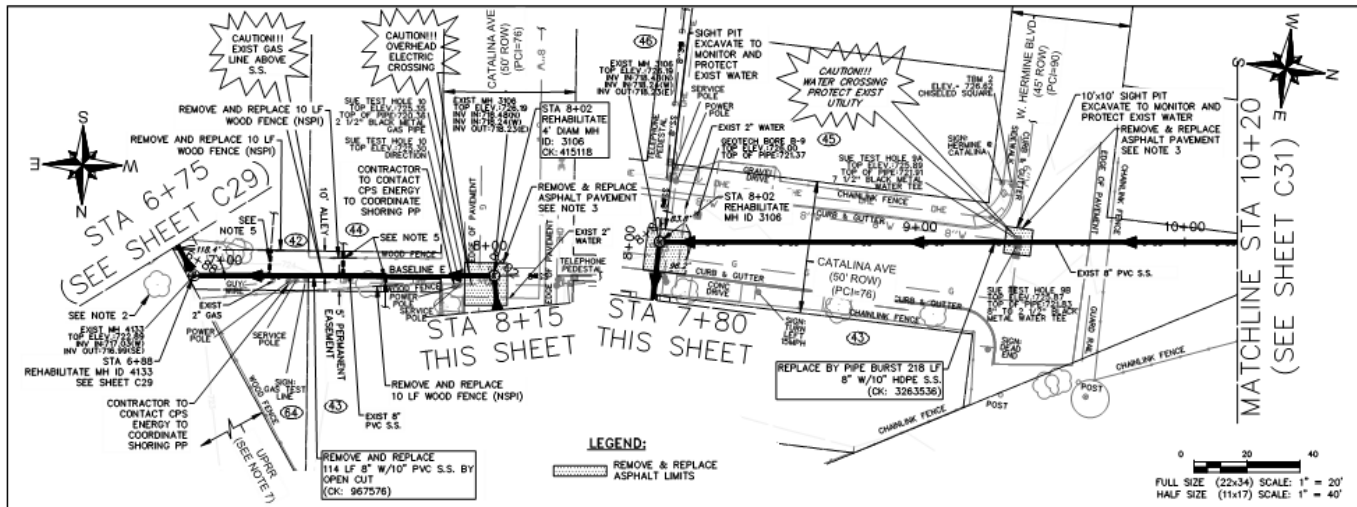


- Adjacent to UPRR, Hybrid Open Cut and Jack and Bore in Steel Casing, on NEW Alignment
- UPRR Coordination and Flaggers
- Utility crossings
- Proximity to CPS Poles
- MH Replacement

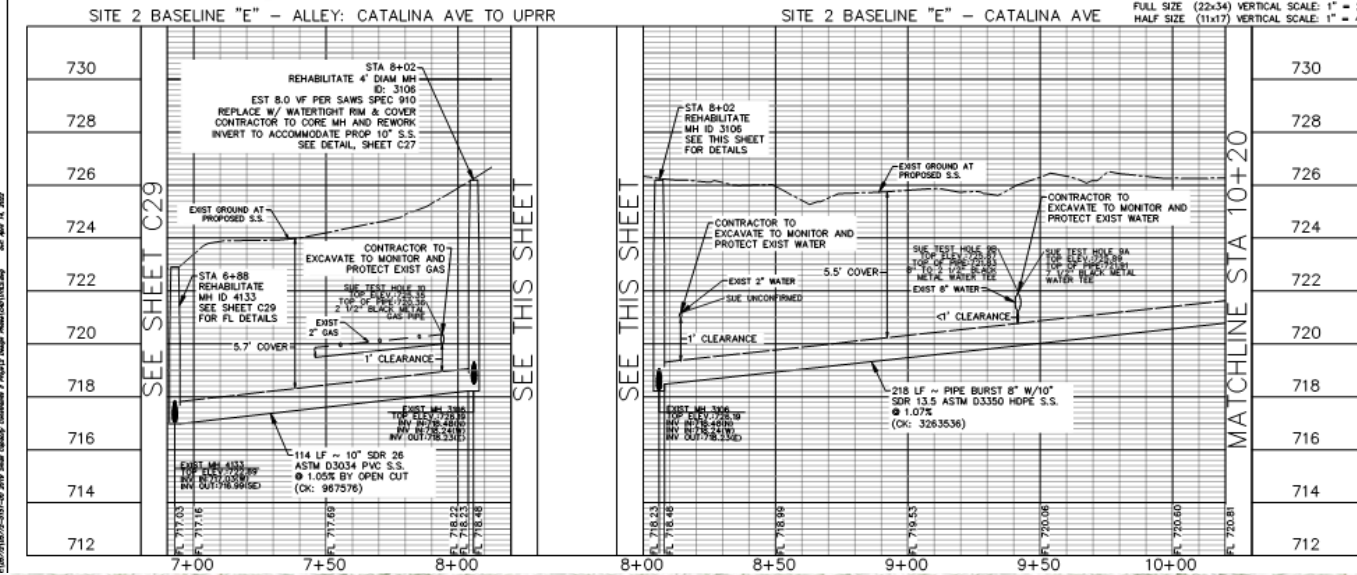
SITE 2 BASELINE "E" – UNION PACIFIC RAILROAD ROW

724	NEW FIBERGLASS MH STA 0+00 ID: 15544 CK: 425124 MH TOP ELEV 719.00 W/ WATERTIGHT RIM & COVER INV IN FL 8" (W) = 709.68 EXTERNAL DROP INV IN FL 8" (W) = 707.63 INV IN FL 10" (NW) = 707.03 INV OUT FL 18" (SE) = 706.80	EXIST GROUND AT PROPOSED S.S.	NEW FIBERGLASS MH STA 3+39 ID: 1165974 CK: 4018255 MH TOP ELEV 721.80 W/ WATERTIGHT RIM & COVER INV IN FL 10" (W) = 713.50 INV OUT FL 10" (SE) = 713.40	724
722				722
720				720
718		139 LF ~ 10" SDR 26 ASTM D3034 PVC S.S. @ 1.88% IN 24" ASTM A135 STEEL CASING (0.438" THICK) BY OPEN CUT (CK: 4011792)	NEW FIBERGLASS MH STA 3+50 ID: 4132 CK: 415489 MH TOP ELEV 721.95 W/ WATERTIGHT RIM & COVER INV IN FL 8" (W) = 714.11 INV IN FL 10" (NW) = 713.78 INV OUT FL 10" (SE) = 713.67	718
716			11 LF ~ 10" SDR 26 ASTM D3034 PVC S.S. @ 1.55% IN 24" ASTM A135 STEEL CASING (0.438" THICK) BY OPEN CUT (CK: 966201)	716
714			EXIST 8" S.S.	714
712	90 LF ~ 10" SDR 26 ASTM D3034 PVC S.S. @ 1.88% IN 24" ASTM A135 STEEL CASING (0.438" THICK) BY OPEN CUT (CK: 4011792)			712
710	EXIST 8" S.S.			710
708	EXIST 18" S.S.		30 LF ~ PIPE BURST 8" W/ 10" SDR 13.5 ASTM D3350 HDPE S.S. @ 0.95% (CK: 3263558)	708
706				706

Site 2 – Santa Paula, Alleys, Catalina, UPRR

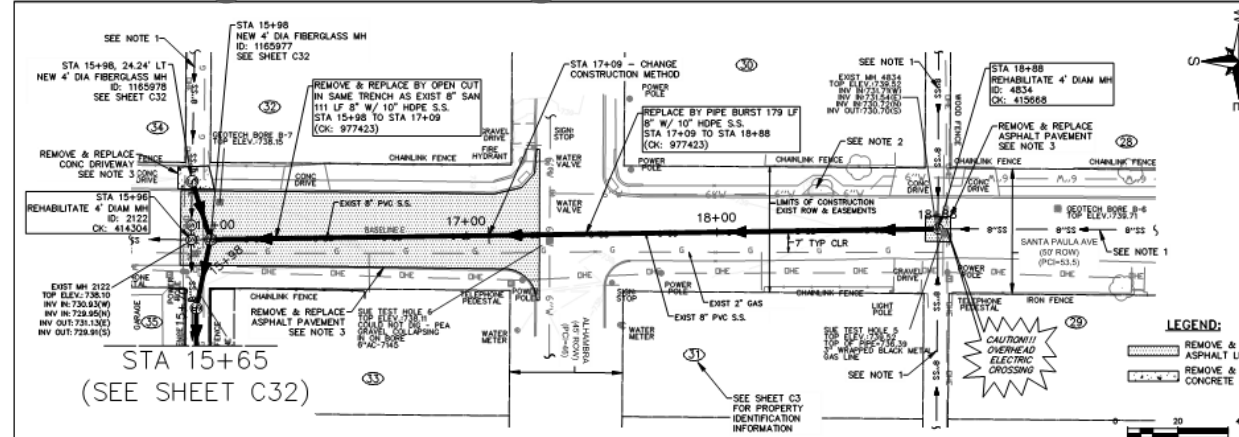
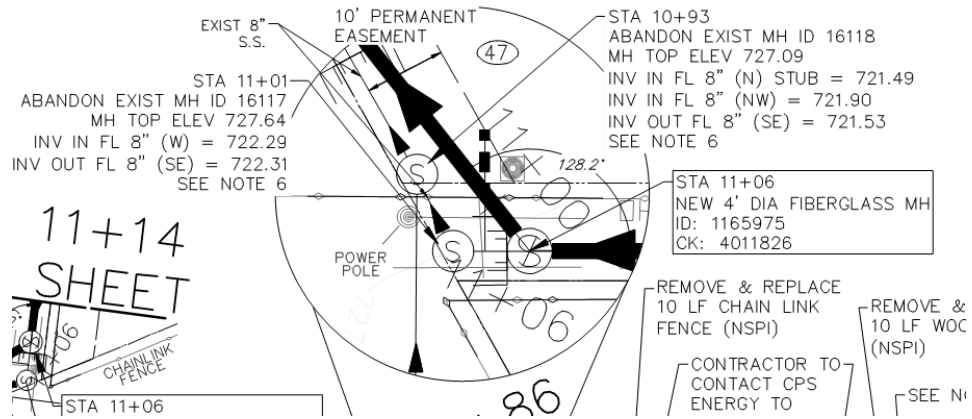


- Hybrid Open Cut and Pipe-Burst
- Utility crossings, Clearance
- CPS Pole Bracing
- Backlot Service Lateral Reconnection
- MH Rehabilitation, MH Replacement
- Fences, Property Owner Structures, etc.
- Bypass Pumping

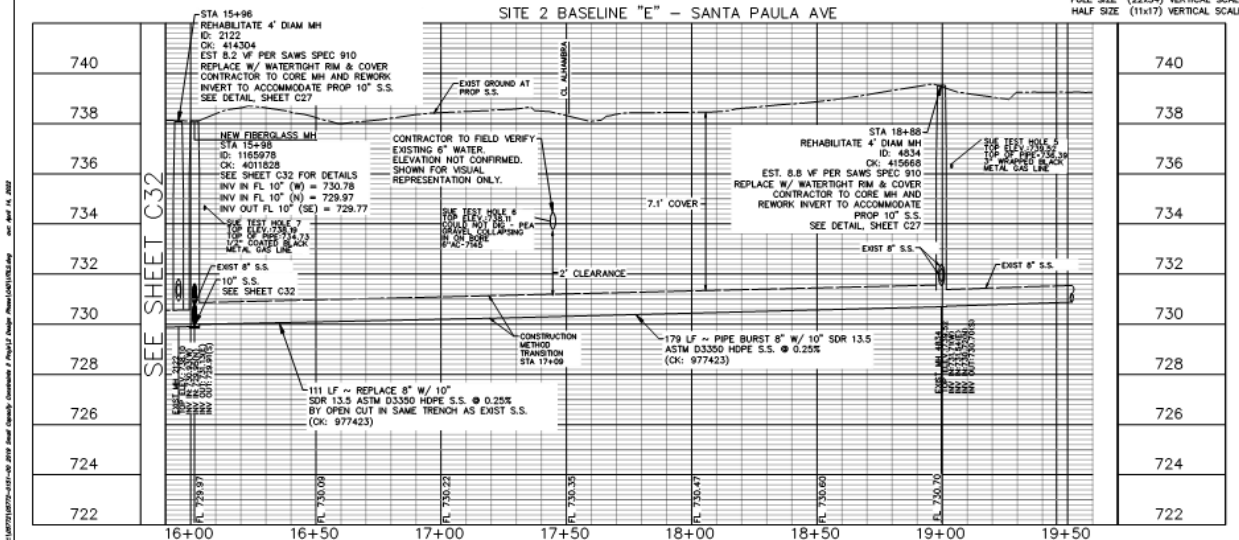
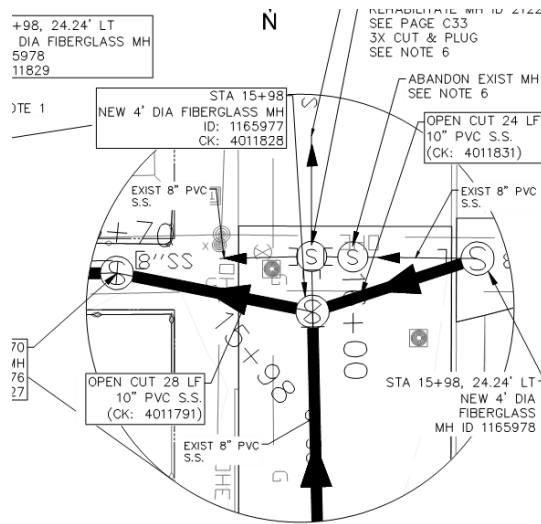


Site 2 – Santa Paula, Alleys, Catalina, UPRR

Mid-segment Change in Construction Method

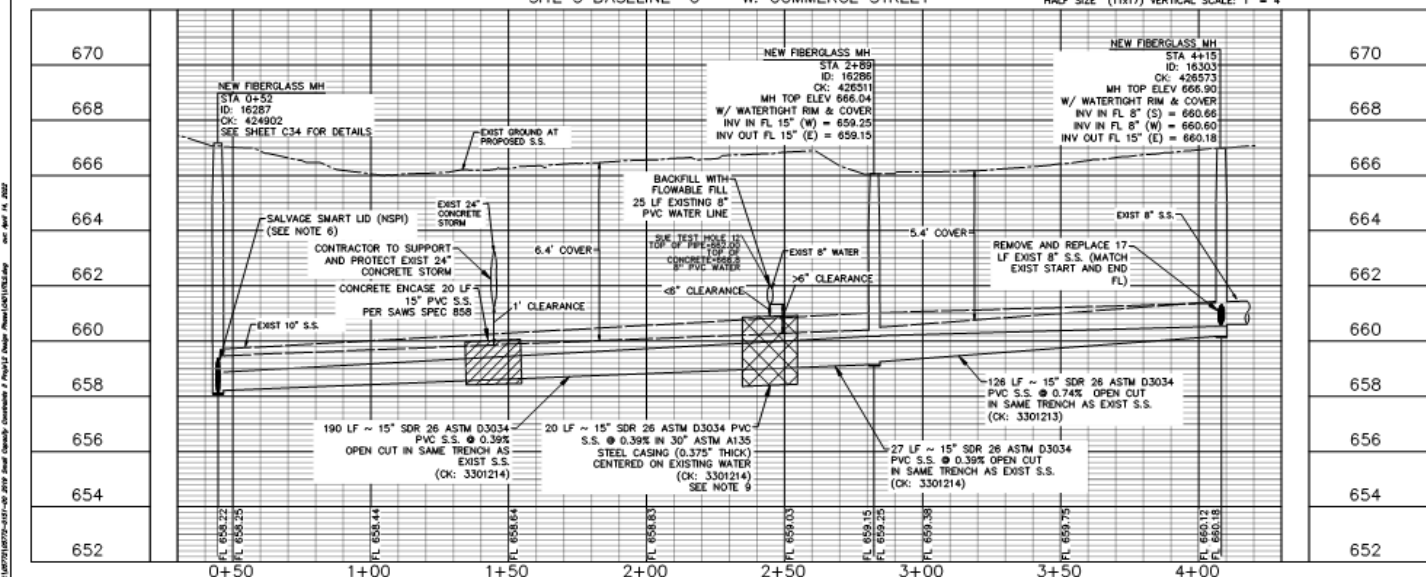
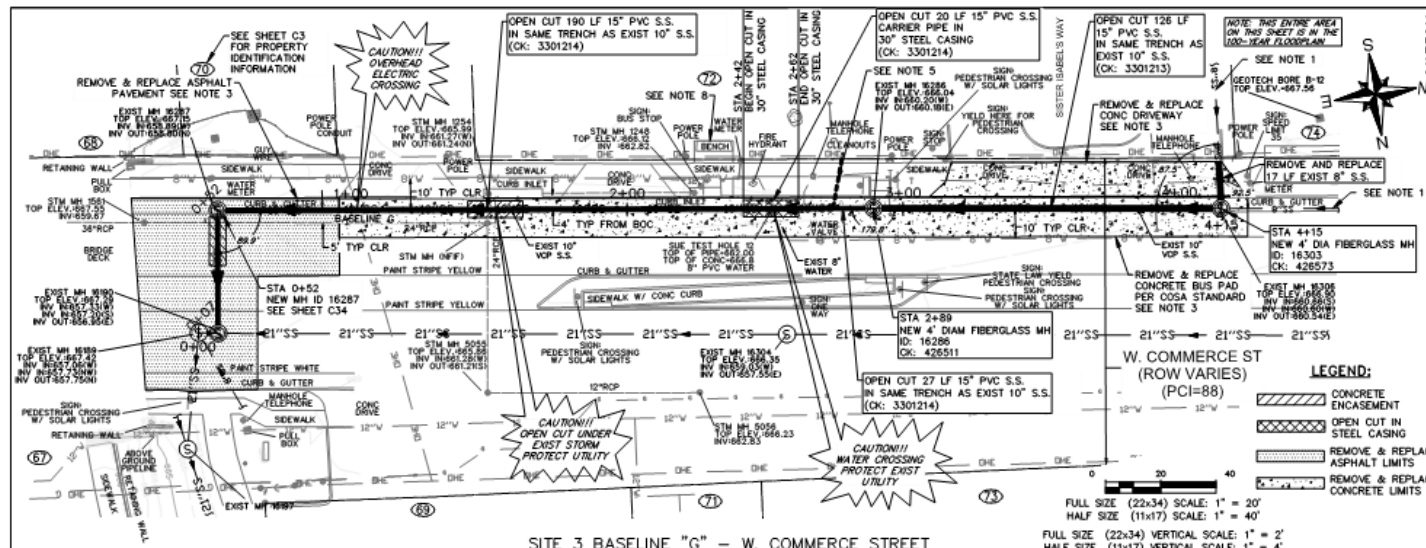


MH Reconfigurations



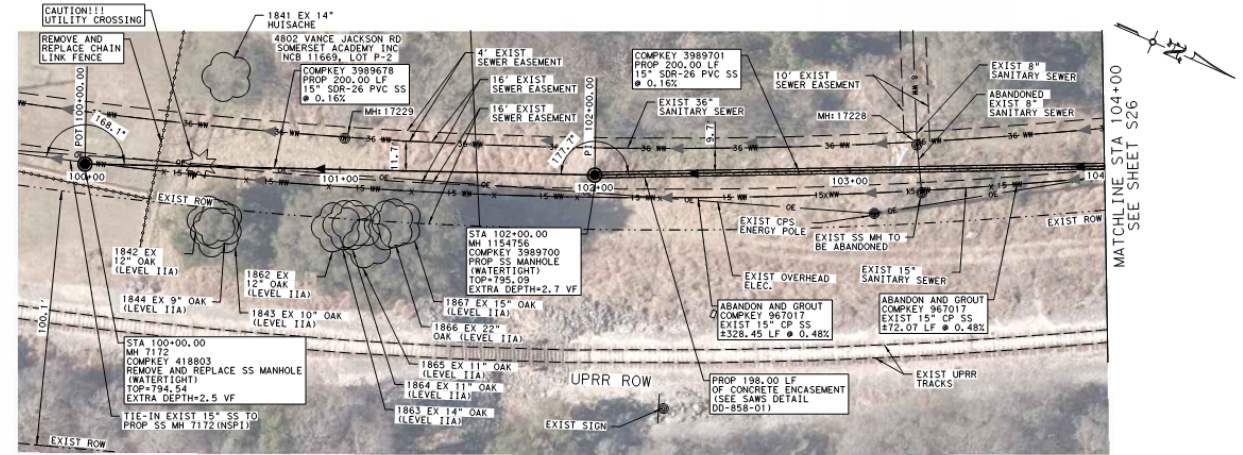
Site 3 – W. Commerce

- Open Cut 15-inch in same trench
- Pavement Removal and Replacement
- Utility Crossings with casing/encasement
- Bypass Pumping
 - CoSA Trails Coordination
- VIA Bus Stop Coordination
- Our Lady of the Lake University (OLLU) Coordination
- 100-yr Floodplain

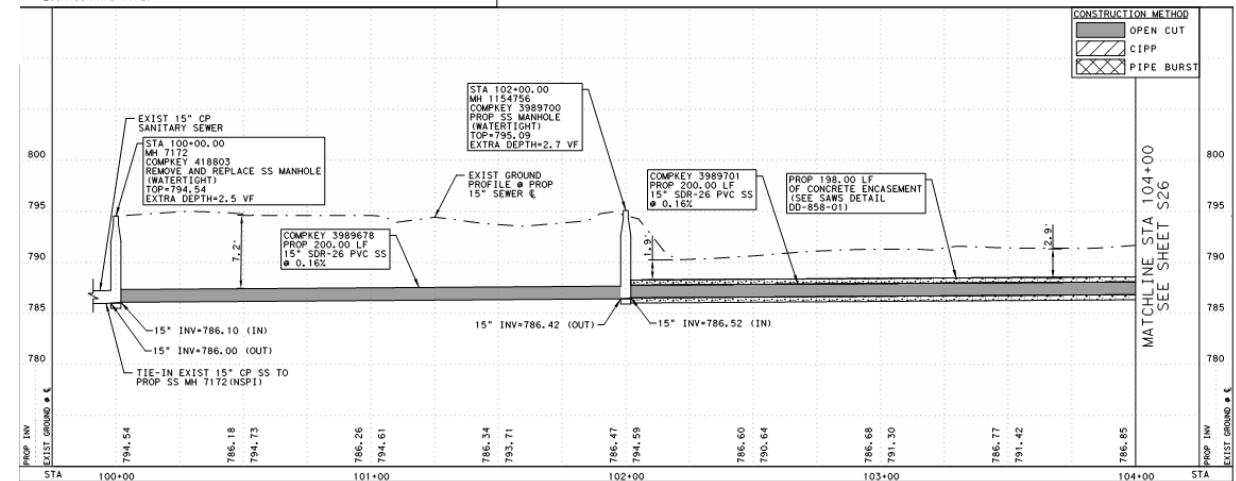


Site 4 – MSP-15 Old Brooks

- Open Cut 15-inch realignment within existing SAWS sewer easements. Manholes will be replaced.
- Easements located along the back of the Brooks Academy Property
- Easements are adjacent to UPRR right-of-way. If Contractor would like to utilize UPRR right-of-way, the contractor shall contact UPRR for required permits as no additional cost to SAWS, as easements and work area are outside UPRR right-of-way.

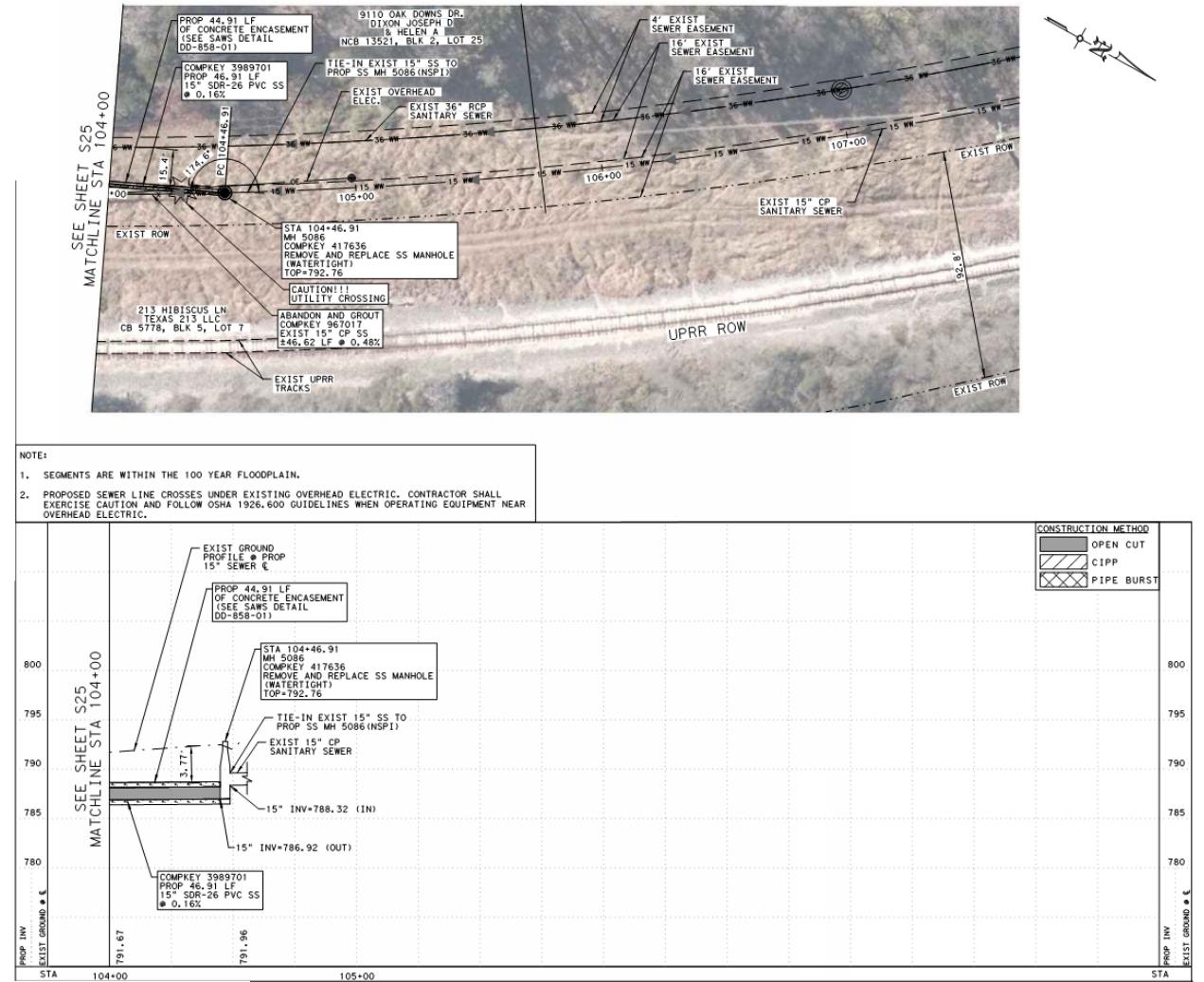


- NOTE:
1. SEGMENTS ARE WITHIN THE 100 YEAR FLOODPLAIN.
 2. REMOVAL AND REPLACEMENT OF EXIST FENCING SHALL BE USED AS NEEDED AND APPROVED BY SAWS INSPECTOR AND ENGINEER AND SHALL MATCH THE EXIST FENCE LOCATION AND TYPE.



Site 4 – MSP-15 Old Brooks

- The suggested bypass route will go through various properties along the existing sewer main.
- Area is within an existing 100-year floodplain.
- Contractor will need to coordinate with Brooks Academy and protect the softball fields along the back of the Brooks Academy property as per the Special Conditions.
- Work for this area must be conducted after softball season is completed around June 2022.



Site 4 – MSP-15 Old Brooks

- Access to the site is through Vance Jackson Rd based on the Suggested Accessible Routes and per the Rights-of-Entry to Construct for the SAWS property near 4802 Vance Jackson Rd.
- Contractor will need to coordinate with SAWS to access Brooks Academy through the SAWS elevated storage tank property.
- Right-of-Entries to Construct have been acquired for this site with an expiration date of 9/30/2022.



Special Provisions to Technical Specifications

- Item 507 Chain Link Wire Fence
 - Measurement and Payment revisions to include gates as subsidiary to fencing.
- Item 540 Temporary Erosion, Sedimentation, and Water Pollution Prevention and Control
 - Prepare and implement the City's Storm Water Pollution Prevention Plan (SW3P) for the project site in accordance with the specific or general storm water permit.
 - Measurement and Payment is "Lump Sum" for the entire project.
- Item 801 Tree and Landscape Protection
 - Measurement and Payment for Tree Protection is "Lump Sum" for the entire project.

Special Provisions to Technical Specifications

- Item 852 Sanitary Sewer Manholes
 - Materials and Construction revisions to SAWS standard specification.
- Item 853 Sanitary Sewer Glass Fiber Reinforced Polyester (FRP) Manholes and Structures
 - Construction revisions to see SAWS Detail DD-852.
- Item 910 Manhole Rehabilitation
 - Materials revision to SAWS standard specification.

Technical Specifications

- SAWS Specifications for Water & Sanitary Sewer
 - Edition: Specifications Updated February 2021.
 - Link in Contract Documents.
- COSA Standard Specifications for Public Works Construction
 - Latest Edition.
 - Link in Contract Documents.
- COSA Right-of-Way Ordinance and Underground Utility Excavation Manual
 - Latest Edition
 - Link in Contract Documents.
- TxDOT and Standard Specifications for Construction
 - Latest Edition
 - Link in Contract Documents.

Special Specifications

- Item 450 Railing (TxDOT)
 - Railing specification for Pedestrian Railing to be removed and replaced (NSPI) off Vance Jackson Rd.

- Item 801 Tree Landscape Protection
 - This item shall govern the placing of protection for trees and other landscape plant material or natural areas to be protected during construction.
 - Measurement and Payment will be measured by Lump Sum per Special Provision 801.

- Item 01050 Survey Controls (SAWS)
 - Survey control shall be considered subsidiary to the work as a whole.

- Item 5000 Settlement Monitoring (SAWS)
 - This item includes furnishing, installing and monitoring settlement instrumentation for measuring ground movements and above trenchless construction operations.
 - This item is considered subsidiary to the work.

- Item 8000 Tree Removal
 - Measurement and Payment will be measured by the unit of each tree removed.

QUESTIONS



Reminder: Oral statements or discussion during the pre-bid meeting today will not be binding, nor will it change or affect the terms or conditions within the Plans and Specifications of this Project. Changes, if any, will be addressed in writing only via an Addendum.

2019 Small Capacity Constraints II

Orlando D. Cruz, P.E., CFM

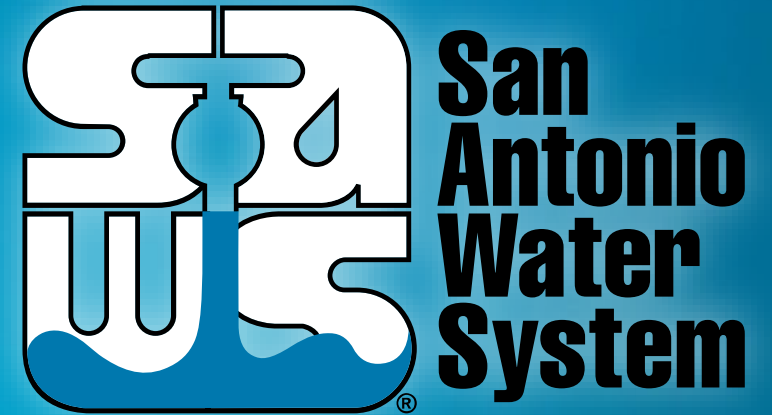
Project Engineer, Sewer & Water Pipeline

Roxanne Lockhart

Contract Administrator, Contract Administration

Tracy Burns

SMWVB Specialist



Non-Mandatory WebEx Pre-Bid Meeting

April 28, 2022

MAKING SAN ANTONIO
WATERFUL 